



The  
Primrose  
Centre

# Primrose News

Spring 2013

## Making Clicks Count



Leading up to Christmas and over the New Year period we had a wonderful offer from Jeff Hunt and Paul Darlow to set up a charity buy and donate scheme in favour of the Primrose Centre.

Making Clicks Count came into existence just in time for all those buying on line for Christmas. Hundreds of companies agreed to partake, including John Lewis, Marks and Spencer, Waterstones and many others.

When we had our Trustees Lunch Jeff and Paul joined us to encourage those attending how they might increase funds for the charity at no cost to themselves.

The charity was so grateful to receive £1,100 through people Making Clicks Count. The six week period was a trial run for the web site, a trial which was hugely beneficial to us.

An enormous thank you to them both.

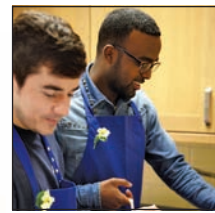
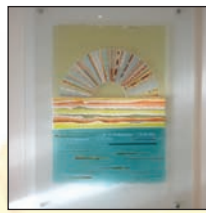
Inside  
Primrose  
News

PAGE 2 – WELCOME TO THE PRIMROSE NEWS • eTraining Ltd • WAITROSE BROMLEY SOUTH

PAGE 3 – WAITROSE BROMLEY NORTH • DARRICK WOOD JUNIOR SCHOOL • MARKS & SPENCER BROMLEY  
• MARKS & SPENCER PLC • ADDITION TO OUR TLC • PRIMROSE CENTRE AGM

PAGE 4 – WESTERHAM HEIGHTS NURSERY FARMERS' MARKET • FUTURE EVENTS • WAYS TO HELP THE CHARITY  
• LOCAL BUSINESSES WHO CONTINUE TO SUPPORT THE PRIMROSE CENTRE





## Primrose News

### Welcome to the Primrose News Spring 2013



### *Dear Supporter*

As I write this in mid March we have just had a snow flurry but with Spring around the corner the primroses are looking lovely, bright spots in the garden.

This edition of Primrose News highlights as always the fundraising and donations raised in the local community which is wonderful.

During the past three months since our last Primrose News the charity has been fortunate in obtaining some generous support which makes it possible to offer therapies to the increasing number of visitors seeking our help.

We look forward to our DVD being available shortly which will give a fly on the wall view of our work.

One of the occasions we have had since the last edition was our AGM of the charity, which highlighted the work, commitment and support by the Trustees, John Watkinson (chairman), Susan Beecher and Bernadette Morrison who play a vital role. Everyone involved is grateful for what they do. Our thanks also to the staff and volunteers who make the centre such a lovely place to share.

As ever thank you for your much appreciated support which makes the Primrose Centre thrive.

Kind regards,

*Mary Spinks*  
\_\_\_\_\_  
Mary Spinks, Chief Executive

## Fundraising

### eTraining Ltd

The charity was so delighted to receive a donation of £2,500 from eTraining Ltd.

### *eTraining-uk.com*

Tim Rowe Director along with Kay, Alex and Vicky have been dedicated supporters of the charity. We can always count on them to join us at a collection on behalf of the Primrose Centre

This funding makes a huge difference to our ability to offer therapies to those seeking our help.

An enormous thank you for their generosity.

## Waitrose Bromley South

A huge thank you to the Waitrose Bromley South branch for their choice of the Primrose Centre as one of their recipients in their Community Matters scheme.

It was with great pleasure we received a cheque for £404 from the branch manager Steve Ray.

Thanks to those who proposed the charity, and the staff and customers for their support.







## Waitrose Bromley North

One of our visitors proposed the Primrose Centre for the Community Matters scheme at Waitrose Bromley North. It was great that the staff believed we warranted that support.

Mary Spinks received a cheque for £350 for the charity from Andy Maconhachie the branch manager.

Thank you to everyone involved. This funding makes extra therapies possible.

## Darrick Wood Junior School

Following the school carol service in December the charity received a donation of £229 from Darrick Wood Junior School.

Thank you to the children who sang, the staff and parents for their part, and especially to James Turvey the Headmaster for his wonderful support.

## Marks & Spencer Bromley

Marks and Spencer Bromley continues to support the charity, donating a further £338 in January.

The publicity and awareness created by the business having our collecting tins in store is a huge boost to the charity. A very special relationship. Our thanks to Jessica Almond, General Manager, her team and the customers who contributed.

## Marks & Spencer plc

As we go to print we acknowledge the super gift of towels for use in the therapy rooms. Such generosity makes it an extra luxury for the visitors. Wonderful superfine blue and cream hand towels and bath sheets to add extra comfort to the couch.

We are really grateful.

## Addition to our TLC

We have acquired a flannel warmer for feet and hands for use with reflexology and hand massage.

Our visitors love it!

## Primrose Centre AGM



The AGM was followed by a Luncheon for thirty five. It was fantastic for so many visitors, ex-visitors, trustees and staff to meet up over lunch.

It gave us ideas on how to improve what we do.

We were so grateful for the huge help given by Alistair, Ghisean and Oliver from Marks & Spencer Kings Road store who gave up their time to serve drinks and lunch. What a lovely thought and they are keen to return for our next Trustees meeting in June!

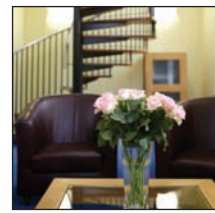
During the day we used the opportunity to take a fly on the wall view of what we do at the centre to add to a short DVD we are compiling. Michel Velasco and Sarah did the photographic work taking hundreds of shots.

Shortly a DVD will be available on our web site:

[www.primrosecentre.org.uk](http://www.primrosecentre.org.uk)







## Westerham Heights Nursery Farmers' Market

We were delighted to be invited to take a stall at the Farmers' Market in December at Westerham Heights Nursery, giving as always an opportunity to raise funds.

With, as usual a willing team of volunteers, including young Lauren who raised £38 in her collecting tin, everyone helped placing tins on each market stall.



During the day donated cuddly toys, cards and unique Primrose Fairies, made by Geraldine Moody, all contributed to raising £357 for the Centre, which will be put to excellent use.

Many thanks to Jackie and Simon Scott, owners of Westerham Heights Nursery and to everyone who helped on the cold but dry Sunday in December.

## Ways to help the Charity

### How to Donate:

- ★ By bank or CAF cheque send to Primrose Centre, 3 Prudence Lane, Farnborough, Kent BR6 8RE
- ★ Credit or Debit card donation call 01689 880218
- ★ Click online [www.mydonate.com](http://www.mydonate.com) and make a donation to Primrose Centre. The total donation and gift aid if applicable will be received by the Charity.

### How can you support the Primrose Centre?

- ★ Attending or organising an event
- ★ Volunteer to support the charity
- ★ Take up a challenge, a run, walk etc.
- ★ Get your workplace involved
- ★ Giving an ongoing donation by direct debit
- ★ Making the charity a beneficiary in your will

## Future Events

Coffee Morning – Cake @ Downe  
Friday 10th May

Maureen & Ted Williams Garden Party  
Sunday 9th June

Primrose Proms at Maureen & Ted Williams Garden  
Saturday 13th July

Primrose Centre Coffee Morning – *Note for your diary*

There will be a coffee morning at the Centre on:

Thursday 11th April 11am

Thursday 9th May 11am

The second Thursday of each month thereafter.

## Local businesses who continue to support the Primrose Centre

BELMONT CLEANERS – Chislehurst  
CLAUS HAIRDRESSERS – Bickley  
COOLING'S NURSERY – Knockholt  
DMR – Farnborough (web site)  
eTraining Ltd – Bromley  
LEA PRINTERS – Orpington  
LUJON RESTAURANT – Keston  
MARKS & SPENCER – Bromley  
MARKS & SPENCER – Orpington  
MARKS & SPENCER PLC  
MMW – Bromley (bespoke furniture)  
ROCKFIELD LANDSCAPE GARDNERS – Chelsfield  
SO CLEAN – Farnborough  
TALLY HO PUB – Knockholt  
THACKRAY WILLIAMS LLP – Bromley  
WISEBYTES – Green Street Green



## Contact Us

If you would like to sponsor the next edition of Primrose News, please contact Mary Spinks:

The Primrose Centre  
3 Prudence Lane, Farnborough, Kent BR6 8RE  
[info@primrosecentre.org.uk](mailto:info@primrosecentre.org.uk)  
Telephone: 01689 880218

Follow us on 

## Sign up to Primrose Newsletter

If you would like to receive a copy of the Primrose Centre Newsletter send an email with your contact details to [info@primrosecentre.org.uk](mailto:info@primrosecentre.org.uk). It can also be read online.